

Tilly wins gold - 4 times!

Young Tilly Oliver-Chambers nervously steps up onto the starting block, looks at the packed crowd around her, and screams as loud as she can: "It's good guys, I've got this!"

As if she's hiding gills and flippers, the 12-year-old dives into the pool - and swims her way to a gold medal. The crowd at Baywave Aquatic & Leisure Centre in Mount Maunganui goes wild.

Tilly, a 12-year-old with Downs syndrome from Helensville Primary School, caused quite a ruckus in a 50m freestyle race at the Zespri AIMS Games, held in mid-September.

The AIMS Games are an annual week-long sports tournament for intermediate-aged students featuring nearly 13,000 athletes from more than 390 schools across the country and overseas.

At the Games Tilly proved to be pretty much unstoppable - winning four gold medals over the course of the week, three for swimming and one for cross country.

Swimming at the 2024 AIMS Games

saw 488 athletes from 157 schools racing over 3679 individual races across three days. There is a multi-class section featuring swimmers with intellectual and physical disabilities.

"We had two young ladies bring the house down at swimming," says AIMS swimming event manager, Bronwen Radford.

"Two young ladies with intellectual disabilities took the blocks and swam the 50 free and I don't think in all my years at swimming I have seen a complex so electric when they swam, let alone the noise level when they finished," she said.

"It was humbling to see everyone around stop to watch."

One of the pair was Tilly, who said she felt "nervous and quite scared" listening to the Baywave crowd roar, "but I was smiling a lot 'cause of my swimming and I love being in a crowd like that."

Tilly initially started swimming simply to keep safe around water. Now, she trains at Northern Arena once a

week. Local instructor Cara Emirali held a few training sessions with Tilly in the lead up to AIMS. Tilly also trains by herself twice a week before school at Parakai Springs.

Now she is a multi gold medalist in her first ever competition, and she hopes to enter more to keep her streak going.

If Tilly could swim anywhere in the world - pool, lake or



• Tilly flat out in her cross country race

- Photo: Zach Quin



• Tilly with her gold medals

- Photo: Zoe Hunter

ocean - she says she'd choose Invercargill.

Her inspiration is Cameron Leslie, a Kiwi Paralympic swimmer who recently placed fourth in both the 50m freestyle and backstroke at the Paris 2024 Paralympic Games.

"I wanna be like him."

Outside of swimming, Tilly enjoys "baking with my dad, food shopping, hanging out with my friends, school, sport, AIMS Games, and visiting my sister in Australia."

Tilly's mum, Meghan, says: "Tilly would've loved to have more girls to race against and make more friends. It's a great opportunity for all kids with disabilities to come down and give it a

go."

Tilly and her mum found everyone at the AIMS Games to be "really supportive and inclusive."

"Thank you to my school, I love that they came down to support," adds Tilly.

- Jordan Sing

Lions Christmas cakes

The Lions Club of Helensville's popular Lions Christmas cakes are now available again. These traditional 1kg cakes cost \$22, with proceeds going to local charities.

Phone 021 0239 1971, available from 84 Cabeleigh Drive, Helensville.

PREMIER

One stop - we do the lot!

- PANEL BEATING
- MECHANICAL REPAIR
- TYRES

Call today for an appointment or FREE quote!

93 Mill Rd, Helensville, Auckland



www.premieronestop.co.nz
www.tyrepower.co.nz

PH 09 420 8806



facebook.com/helensvillenews



helensville.news



helensvillenews.co.nz

MID WEST
PUMPS



- Water Pump Sales & Servicing
- Water Filtration Systems
- Filter Supplies
- Deep Well & Submersible Bore Specialists

420 7694

www.midwestpumps.co.nz

info@midwestpumps.co.nz



**Hato Hone
St John**

HELENSVILLE STORE

90 Commercial Rd, Helensville

Mon-Fri: 9.30am - 4.30pm

Saturday: 9am - 4pm

Ph: 420 9272 027 274 5187

**Parakai
Springs**

Open 7 Days

www.ParakaiSprings.co.nz
info@parakaissprings.co.nz
0800 HOTPOOLS (468 766)



editorial

It's hard to imagine a New Zealand overrun with kiwi. Our national bird is seldom seen, being both rare and nocturnal. But kiwi are very good breeders, with mostly long life spans (up to 40 to 60 years for the North Island Brown Kiwi, which is the one around this area) and with no natural land-based predators could conceivably be common throughout Aotearoa.

Unfortunately, in their 'wisdom' our colonial forebears decided in the 19th century to introduce rabbits to New Zealand, for both sport and meat. As we know rabbits breed like, well, rabbits. They soon multiplied to plague proportions, so with an even greater lack of foresight the colonials then introduced ferrets, stoats, and weasels to combat the plague.

These mustelids, however, didn't discriminate between cute little introduced bunnies and native young kiwi and other birds. They have since become the bane of our native fauna. Kākā, kākārīki, wētā and many other native species have fallen prey to these voracious hunters - plus others such as feral cats.

So it was with great interest that I learned kiwi are to make a comeback to our local area (see page 4). It's not going to be as simple as just watching them trot down through the remaining patches of bush and turn up in our gardens. It's going to need management - namely, pest control.

Our article has information about how landowners with bush blocks can help, but I would suggest that those who can't or don't want to take part in official pest free programmes at least make an effort on their own. If you are lucky enough to own a piece of land big enough to have significant bush on it, chances are the cost of a trap or two won't be a hardship - and think of the potential return, with the chance of spotting a kiwi on your own land!

- Dave Addison, Editor
dave@helensvilleneews.co.nz

Dairy theme for museum's 2025 calendar

The 2025 Te Awaroa Museum calendar is all about 'dairy' - which also happens to be the theme for next February's Helensville Show.

The Helensville area has had a long and interesting history with the dairy industry, dating back to 1894 when Ambury and English set up the first creamery at Fordyce Road, Parakai. Farmers from Te Pua, Parakai, Ohirangi, and Parkhurst loaded their draught horses and travelled the uneven roads to take their cream to that creamery.

On arrival they would unload their cans and then the cream was extracted for making butter. The farmers' cans were then refilled with the skim milk which was returned to the farms to feed the pigs.

The original Kaipara Dairy Company factory started life as a butter factory at Wayby on the outskirts of Wellsford. It was moved to a site on the riverbank at Helensville South (about where Rimu St is today). The building was a simple shed about 20 feet by 50 feet. It faced the west and had an unloading platform near Mill Road.

At the new factory in Mill Road in 1974, General Manager K. R. Burnett announced the inclusion of soya beans to the factory's products. In an effort to diversify, the company ventured into the manufacture of margarine - the first New Zealand company to do so - and built an edible oils factory



• The old Kaipara Dairy Company factory in Helensville

adjacent to the main factory and produced the 'River Valley' margarine brand.

Ultimately diversification resulted in the manufacturing of not only margarine, but yoghurt, specialised cream mixes for manufacturers, and frozen cream mix for the American market.

At Waimauku a third and final factory was opened in 1924. The building was designed by Arthur Lewitt Fernyhough (1872 - 1936), known in city circles for the design of significant residential homes including Florence Court in Epsom. He took up farming in 1919 but returned to architecture within a few years. No doubt his farming experience would have been useful for commissions like the Waimauku Dairy Factory.

All proceeds from the calendar go to the running of Helensville's local museum. They cost \$15 for Historical Society members and \$20 for non-members. Available now at the Te Awaroa Museum, Paper Plus Select, and FIGG.

Prestige

Real Estate International Ltd
Licenced REAA2008

f Jana Mills
Real Estate Specialist

Mob: 021 509 990

jana@prestigerealestate.co.nz

local
EXPERT

BUYING OR SELLING PROPERTY?

Knowledge and experience yields many advantages in real estate. I know how to make selling or buying a home an adventure. Call me when you are ready to start yours.

Jana Mills



Win this kete in AiV treasure hunt

Visitors to Arts in the Ville, being held around Helensville over Labour Weekend, will have the chance to win this corrugated iron kete artwork by local sculptor Jeff Thomson.

The kete will be the prize in the visual treasure hunt which has become a popular feature of the three-day arts festival over the past few years. Twenty treasure hunt clues featuring the numbers 1 to 20 made from a variety of materials like corrugated iron, concrete, plastic, and aluminium, and all with a 'corrugation' theme will be spread around venues over the weekend. The prize will be on display at the War Memorial Hall during Arts in the Ville.

Entry forms will be downloadable from artsintheville.co.nz and from the event Facebook page. Completed forms must be placed in the entry box in the Helensville War Memorial hall by 4pm on Monday, October 28 and the winner will be drawn at 4.15pm.

Five new artists will have their works on show over the weekend, the ninth year Arts in the Ville has been held. Plus there will be four new crafters in the Makers Market, this year back in the Helensville War Memorial Hall.

Organiser Jo Ogilvy says she can still take additional stallholders for the Makers Market right up to Thursday, October 24.

The hall's meeting room will house a 'salon' featuring examples of participating AiV artists' works to help people decide which studios they prefer to visit.



The event's home base will be in the hall foyer which will be manned each day for questions and directions - and will also display the kete treasure hunt prize.

Helensville Floral Art Club's will have a 'Wedding Breakfast'-themed display in the Masonic Lodge in Kowhai Street.

A highlight of previous Arts in the Ville events has been the 'Whimsical Garden' of Tracey and Nick Roberts. The have moved since last year's AiV, but have created a new garden filled with whimsy that will again be open for the event. Their garden will also house Trae Whimsical ceramics studio and as usual there will be live music. Also for garden lovers, Raywin Cruikshank's Rogan Ave studio will again be open and visitors invited to wander through her beautiful garden.

The entry deadline for the young emerging artist competition featuring \$1000 in prize money announced in last month's *Helensville News* has been extended to Saturday, October 19. Contact Jo Ogilvy (events@artcentrehelensville.org.nz) for an entry form - it's free to enter. Entrants must be from our area, however Kaipara College students who live in Muriwai or Waimauku are able to enter.

The entries will be displayed in an exhibition at the Art Centre for the duration of Arts in the Ville.

For latest news leading up to the event visit the Arts in the Ville Facebook page.

Kaipara Cup - a boat race with a difference

It may not have the speed of the America's Cup, but the Kaipara Cup - a boat race with a difference - is a new feature of this year's Arts in the Ville.

It's different because the race will be for paper boats, which must be made from natural materials only. If a design requires ballast, that also needs to be natural material. Maximum dimensions are 400mm x 400mm x 400mm. Full rules are online at: artsintheville.co.nz.

All boats will need to be delivered to the Helensville Art Centre before 3pm on Saturday, October 26, and the race will be held the next morning at 9am. They will be released from a boat on the river 200m upriver from the Creek Lane jetty, which will serve as the finish line.

All the boats - at least those still floating - will be collected after the race. There will be a trophy made by local sculptor Jeff Thomson and prizes donated by him for first, second, and third places.

Jeff will hold two free make-your-own paper boat workshops at the Helensville Art Centre on Saturday, October 19 and Sunday 20 for locals keen to learn how to make a potentially winning craft.



LIFESTYLE MOWING MACHINERY

"We will put the fun back into mowing"

LIFESTYLE MOWING MACHINERY

- Quality brand mowers & ride ons
- Unparalleled service & support
- Large product range

Come in and see us today!
8 Stevens Lane
Waitoki
0274 955 948
www.moadoc.co.nz

WATER Wagon 1

Graeme Waterson

LIKE US ON facebook

027 280 2630

'Pure Spring Water Carriers'

European Motor Repairers Ltd

specialising in

VW | Audi | Skoda | Porsche | Mercedes | BMW

SERVICING | REPAIRS | DIAGNOSTICS

Helensville 021 255 4678

WHY PAY MORE?

2.90%

Commission rate to \$500,000
then 2% thereafter + GST

FREE MARKETING + FREE APPRAISAL

SUBURB WINNER - HELENSVILLE
SUBURB WINNER - PARAKAI

2023 AGENT OF THE YEAR AWARDS TOP 100 AGENCY

BURMESTER REALTY

LICENSED UNDER THE REAA 2008

Buying or selling?
Give us a call today...

0800 18 88 80

Sean Gray Electrical Ltd

- For all your electrical requirements
- Repairs, maintenance & new installations
- Overhead to underground conversions
- Underground services to new homes
- New alarm systems

0274 784 396

Ph/Fax (09) 420 5122, (09) 420 8978
email: seangrayelectrical@xtra.co.nz



ATL PLUMBING LTD

QUALITY SERVICE AT COMPETITIVE RATES!

- Maintenance
- Renovations
- Cylinders
- Roofing
- Spouting
- Central Heating
- Gasfitting + more...



Find us on Facebook

**CONTACT US
WITH ANY ENQUIRY
OR FOR A
FREE QUOTE**

Ph: 09 420 7868 Adam: 021 245 9677

Or: 0800 285 758 (0800 ATL PLUMBING)

Email: adamandanita@xtra.co.nz

Downsizing, De-cluttering or Moving?



*We're locals interested in buying your old stuff
for cash - kitchen and dinner ware, tools,
wooden furniture, bric a brac + much more.*

Call or text on: 020 4120 4777

Email: remu@xtra.co.nz

Kiwis coming to Kaukapakapa

The kiwis are coming!

The Forest Bridge Trust expects kiwi to make their way naturally into the Kaukapakapa area next year - and now a push is on to make the area as predator-free as possible.

An ecologist working with the Trust modeled the range young North Island Brown Kiwi from breeding adults at Mataia farm near Glorit could move into, based on bush remnants, and plotted the birds' most likely migration routes, concluding they could arrive at Kaukapakapa in 2025.

The projections have proven accurate, with Kiwi since spotted on the south side of Makarau, and there have been unconfirmed reports of kiwi already on a Kaukapakapa property.

"The kiwi are following her estimated path," says Tris Bondsfield, the Trust's community liaison officer.

The expansion of the kiwi's range has prompted the Trust to extend its area of operation south as far as Kahikatea Flat Road. Previously it only supported landowners as far south as Makarau.

Now, the Trust and Predator Free Kaukapakapa are looking for more landowners to take part in a trapping programme to ensure predator numbers are low enough that young kiwi can survive when they arrive in the area.

Kiwi up to the age of three years, when they are old enough to breed, are most at risk from mustelids - stoats, ferrets, and weasels - and also from dogs.

Working with Predator Free Kaukapakapa, the Trust will provide one free GPS-enabled stoat trap to people with 10ha of suitable bush.

Tris says neighbours of smaller properties can band together to create a 10ha 'block' and take turns monitoring the trap. The Trust will provide education on where to put the traps, how to check them, and how to report catches using the Trap.NZ phone app.

And the bush doesn't have to be native - kiwis will happily make themselves at home in exotic plantations as long as there is a suitable understory.

Participants must agree to check the traps at least once a month. Kaukapakapa area landowners wanting to take part can contact Tris on 022 024 0314 or email her at: Tris@theforestbridgetrust.org.nz.

The Trust is also partnering with Save the Kiwi and the Department of Conservation to offer free kiwi dog avoidance training, which teaches farm or pet dogs

the skills to avoid kiwi habitats. People can register their interest in the courses online at: www.theforestbridgetrust.org.nz.

Mataia farm and its surrounding 'buffer' zone is currently home to around 300 brown kiwi, and they are starting to move out in search of new breeding grounds.

Tris says contrary to popular belief kiwi are prolific breeders, but being flightless the young are very much at risk from introduced predators like mustelids, dogs, and to a lesser degree possums. She says with no



• Some of the landowners taking part in the pest control programme, from left: Liam Kyle, Danielle Hancock, Forest Bridge Trust community liaison Tris Bondsfield, Kim Hutchison, and Tracey Woulfe, with some of the traps

predator control, only five percent of kiwi chicks will reach breeding age - whereas in predator-free areas that jumps massively to 95 percent.

"If we can protect kiwi, they will do really well. They are very good breeders."

Kiwi territories range from 2ha to 100ha depending on species. Bonded pairs usually stay together for life - but divorces can happen! North Island Brown Kiwi can lay eggs in any month, and a female can lay up to 100 in her lifetime. The North Island Brown Kiwi can live up to 60 years.

Tris says it's not known how far the kiwi from Mataia will eventually spread, but it is hoped they will

• To Page 5



Helensville Montessori

An Early Learning Centre for children aged from 2 to 6 years.

Where "skillful teachers support children to become confident and competent learners." - Education Review Office

And with generous garden spaces for serious running and playing.

Come and see us anytime. We'd love to show you all that Montessori can offer your child.

58 Garfield Road, Helensville. 09 420 7181

www.helensvillemontessori.co.nz and

Super Heroes coming for fire open day

Fire Service 'super hero fire fighters' Amber and Flint will be in town when the Helensville Fire Station opens its doors to the public at its open day on Saturday, October 5.

They will be on hand for a couple of hours for photos and to interact with children and families.

Locals will be able to tour the station and fire engines between 10am and 2pm. and there will be live kitchen fire demonstrations, and at midday a car cutting demonstration.

As well as Amber & Flint, sure to be hits with the younger crowd, there will be an escape maze and a bouncy castle.

While aimed primarily at children, the escape maze can also be used by adults. Its primary purpose is to show people how to get down, get low, and get out of the building in a house fire.

"It is a good physical indicator of just how low you need to get to ensure you stay out of the smoke,"

says Shane Gibbons, a specialist fire investigator at Waitemata Fire District headquarters.

Being held over the middle of the day, there will be food options including the local Truckin' Delicious food truck with themed

food specially for the day, a coffee and ice cream truck, and a sausage sizzle available for koha being run by brigade members as a fundraiser.

Helensville Fire Station is at 9 Rata Street.



• Fire Service super heroes Amber and Flint - Photo: Peter Henderson

Kiwis coming to Kaukapakapa cont...

• From Page 4

follow bush remnants and just keep going. Kiwi can travel long distances in a day.

"But if there is no predator control only five percent will survive to adulthood. Mustelid control is vital."

"The beauty of the project is while the funding is kiwi-specific there's an amazing knock-on effect for other species in the area," says Tris, pointing to the return of bird species like kākā, and kererū and tūi being seen in flocks rather than just as individual birds.

The Trust currently works with around 900 individual land owners, and is on target to be covering 55,000ha by June 2025.

However, that's when its Jobs for Nature funding runs out.

"The current government is not renewing [the funding]," says Tris. "They are not very conservation minded."

"As we prepare for kiwi to naturally move into Kaukapakapa, it's a powerful reminder of what can be achieved when communities unite in the protection of our taonga," says Ana Christmas, Trust CEO.

"Ensuring these kiwi have a safe habitat free from predators is critical to their survival and the regeneration of biodiversity in the area.

"Our partnership with landowners and local conservation groups has already made a tangible difference, and together we can continue to create a

safer, more connected landscape where our native species can thrive."

Danielle Hancock from Predator Free Kaukapakapa says the group has around 16 members, but a number of new people have already come forward since finding out about the kiwis online.

The Forest Bridge Trust is also working with Pest Free groups at Waitoki and Dairy Flat.

Locals of course don't have to rely on the Forest Bridge Trust to supply traps. A DOC250 Mustelid trap costs around \$80, and possum traps range from \$50 to \$80, and are available from Connovation. While ferrets and stoats are the biggest threat, possums will take eggs and kiwi chicks.

The seed of The Forest Bridge Trust was planted by founders Kevin and Gill Adshead when they reintroduced kiwi to Mataia, their farm at Glorit in 2013. They dreamed of the kiwis having the freedom to roam safely and eventually reconnect with their cousins at Tāwharanui Regional Park on the east coast. Working with landowners, farmers, iwi, and the community they aimed to transform the landscape through fencing, reforestation, and the eradication of pests and predators.

In 2014, Kevin and Gill formed The Forest Bridge Trust with like-minded people who shared their vision - an entity which has evolved into an effective organisation working to connect, protect, and enhance the landscape from coast to coast.

Shop Local Locals supporting locals



paperplus

Select

TICKLE YOUR IMAGINATION

P: 09 420 8646

64 Commercial Road, Helensville

E: helensville@paperplussselect.co.nz

www.paperplus.co.nz

KPL

KUMEU PLUMBING LTD

 plumbing

 roofing

 solar heating

 pumpshop

 pool & spa

 woodfires

 gas fitting

 drainage

Ph 420 9108

156 Main Road, Kumeu info@kpl.co.nz www.kpl.co.nz



We finance almost anything!

Talk to the team today.

☎ 09 399 2478

✉ kumeu@mtf.co.nz

📍 82A Main Road

mtf.co.nz/kumeu

Offer of finance is subject to terms, conditions, lending criteria, responsible lending inquiries and checks. See [mtf.co.nz/terms](https://www.mtf.co.nz/terms) for details.



mtf
finance

KUMEU

Sellars Law Helensville Law Office

For all your legal services including:

- Wills & Trusts
- Estate Administration
- Property Relationship Matters
- Refinancing
- Commercial Matters
- Land Subdivision
- Residential, Rural & Commercial Conveyancing



69 Mill Road, Helensville
Ph: 09 420 9324
Email: admin@sellarslaw.co.nz
sellarslaw.co.nz

ACCOUNTANT

UHY Haines Norton
Chartered Accountants

- Farm & Lifestyle Block Specialist
- Business Planning & Development
- Financial Analysis

OFFICE MARK FOSTER
09 412 9853 021 220 5817

Office hours 8.30am - 5pm
329A Main Road, Kumeū



Manipulation | Acupuncture | Sport Injuries

**Your local expert Physiotherapists
& Registered Hand Therapists**

- **No referral needed.**
- **Lodge your ACC claim here.**
- **Early morning & late night appts.**
- **Gym facilities on site.**
- **Kaipara College student discount for ACC claims.**

BOOK ONLINE AT:
www.physioflex.co.nz

facebook.com/physioflex physioflexhlv

Ph 420 8899
info@physioflex.co.nz
10 Commercial Rd, Helensville

Coastguard opening



• Coastguard Kaipara president Iain Gulliford addresses the crowd at the opening

Good numbers attended a dawn blessing by local Māori and the subsequent official opening of Coastguard Kaipara's new Marine Rescue Centre.

Unfortunately wet weather set in during the morning, but that still didn't deter about 60 locals from turning up to look at the \$720,000, 350sq.m. facility by the Springs Road, Parakai wharf.

A kapa haka group from Parakai School performed during the official mid-morning opening in front of around 100 guests, including sponsors, contractors, representatives from Coastguard New Zealand, Rodney Local Board members, and former members of Coastguard Kaipara.

Greg Skinner, Coastguard Kaipara vice president, described the opening as "a landmark day for the communities of

Helensville, Parakai, and the wider reaches of the Kaipara Harbour.

"This is a local asset, built by locals, manned by locals, to provide marine rescue service on the local harbour."

To stress how local the project was, Greg pointed out that even the carpet tiles used had been recycled from Parakai School classrooms.

The design of the building was developed over almost two years - right over Covid - and Coastguard Kaipara unit member Dave Smith from Congo Design came in for a special mention for providing his architectural services for free.

The lower floor has storage, a workshop, lockers and a bathroom, while on the upper level is an office and training room, complete with a kitchenette. The building collects and uses its own water, and is completely solar powered.

Its design has been future proofed to allow enough room for a second rescue vessel, a promotional trailer, tractor, and Quadski. It will also be a venue for open days, boating safety days, coast guard courses, and bar crossing seminars.

Construction was made possible in large part by Auckland Council providing the land at an annual lease of just \$1, and generous donations from Mr Geoff Henderson, Helensville Lions Club, and Coastguard New Zealand.



• Kaumātua Richard Nahi at the opening

KDC employees sought

In its day the Kaipara Dairy Company (KDC) was the biggest employer in the Helensville district.

To tie in with the 'dairy' theme for next year's Helensville Show, show organisers want to get a group photograph of any former employees who still live in the area. Any locals who worked for the KDC at any stage are asked to contact the office on 021 529 689 or by email to: info@helensvilleshow.co.nz.

On Saturday, February 22, the Show will feature a display of Kaipara Dairy Company memorabilia along with information on dairy farms in the area during its heyday.

The employee photo would be part of that display, and would be shared with Helensville's Te Awaroa Museum.

Tiling & waterproofing

EUROPEAN TILER
OVER 20 YEARS EXPERIENCE

OUR SERVICES:

- ✓ BATHROOMS
- ✓ KITCHENS
- ✓ DECKS
- ✓ SWIMMING POOLS
- ✓ STONE WORK
- ✓ AUCKLAND COUNCIL APPROVED WATERPROOFING

GET A FREE QUOTE!

Call Zibi:
021 838 027

WWW.EUROPEANTILER.NZ

South Kaipara Men's Trust

Tama Tu Whanau Ora

**Strengthening
men and their
families to help
build better, safer
communities.**



10 Awaroa Road, Helensville
(former Te Awaroa Youth Club building)

P: 027 800 8081

Hours: Monday and Tuesday 10am to 4:30pm

Hundreds enjoy College centenary



• The history and memorabilia displays in the college library were very popular

Around 300 people took part in the Kaipara College and Helensville District High School centenary celebrations in late September.

Wild weather all the preceding week cleared up just in time for the Ag Day on the Friday afternoon, and stayed pleasant for the whole weekend.

The centenary officially got underway with an opening ceremony featuring a pōwhiri, haka, karakia, and mihi. College principal Cindy Sullivan spoke, then an original centenary poem written by student leader Noah Everard was read by head student Tyla Baker. Long-serving former principal John Grant, and local pastor and college alumni Tim Forlong rounded out the speakers.

After the formal opening, former students and staff enjoyed tours around the school, browsing exhibits of school history and memorabilia, special morning teas, netball and rugby matches featuring current and former students, official group photos, and an evening dinner and dance held at the Helensville Rugby Club rooms.

RSA reopens at last

After 22 months of seemingly endless renovations, the Kaipara Memorial RSA in Commercial Road has finally reopened.

An official opening will be held on Saturday, October 12 from 2pm, with an opening address by President Rex Keane, followed by the Ode of Remembrance to the Fallen. Afternoon tea and live music will follow the opening, which will include a Life Membership presentation.

The reopening is a public event and everyone in the community is invited to attend. There will be military vehicles on display and the RSA museum will be open to the public.

For locals who would like to join the KMRSa, the annual membership is \$30 and there is no requirement to be service or former service person to join - although local service and ex-service personnel are warmly welcomed.

Show trade and free community site bookings open

Bookings for trade stands at the 2025 Helensville Show are now open.

Anyone interested in taking a trade stand, either commercial or food, at the Saturday, February 22 event can find information including a booking form on the Show website at: <https://tinyurl.com/show-trade>.

Early bird rates apply for trade site bookings made up until the end of October - to secure a booking an application form must be completed and returned to the show office and payment made.

Each year Helensville Show also provides 10 free sites for community groups such as local charities and sports groups. These are smaller, unpowered sites and with only a few available early reservations are recommended.

School Ag days coming up

Local primary schools will hold their Ag (agricultural) Days on the following dates:

Parakai: Thursday, October 17; Helensville: Friday, October 18; Kaukapakapa: Saturday, October 19, will also be a fundraising event with stalls and food; Waitoki: Saturday, October 19, starting at 8.30am, followed by a country fair beginning at 11am featuring stalls, games, displays, and food; Waimauku: Saturday, October 19 combined with a gala; Waioneke: Saturday, October 19, combined with a gala; Wainui: Friday, October 25, combined with a gala; Woodhill: Friday, November 1.

Group Day will be held at the Helensville Showgrounds on Friday, November 1.



HELENSVILLE BOWLING CLUB

Email: helensvillebowls@gmail.com

New social and playing members welcome

- Two greens, one natural and one carpet (all weather)
- Evening business house bowls in summer
- Indoor bowls during winter
- Weekly roll-ups and regular Club Comps
- Room-hire available

38 Awaroa Road, Helensville
Phone 09 420 8316

Facebook: [HelensvilleBowlingClub](https://www.facebook.com/HelensvilleBowlingClub)

Rusty stuff? Get stainless fasteners at...

Thrifty

AUTO SUPPLIES LTD.

Open: Mon - Fri 8am-5pm | Sat 8am-12pm
Phone: 09-420-7127 | 103 Mill Road · Helensville

Bits & bobs to
keep you going.  GIFT CARDS
AVAILABLE

thriftyautosupplies.co.nz

Building Platforms • Utility Trenches •
Ponds • Drainage • Drilling •
Aggregate Supply • Tip Trucks •
Excavators • Bobcat with Attachments



DRIVEWAY REPAIRS & RE-SURFACING

Call us for a FREE quote

0800 4SWALE 

or 09 420 8352. 103 Mill Road Helensville

MCLEOD MOTORS

- WOFs
- All Mechanical Repairs
- Auto Electrical
- Tyres & Batteries
- Stockists of 'Total' lubricants

5 Railway Street, Helensville
Ph: 420 8633

Mark Dennis
Your Rodney Local Board
Elected Member 

*"I'm Local
and I'm here
to help"*

mark.dennis@aucklandcouncil.govt.nz

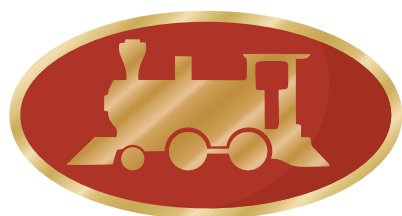
HELENSVILLE
LAUNDROMAT



**OPEN 7 DAYS
7 AM - 8 PM
SELF SERVICE**

63 MILL ROAD 021 211 1547

Helensville Railway Museum



OPEN SUNDAYS

Helensville Railway Museum is open every Sunday from 10.30am to 3pm.

Bring the family to see our fascinating displays of working model trains and the history of the railway in Helensville.

Adult \$5, Child \$2, Family \$10. Sorry no Eftpos

Ph 09 420 8961 www.helensvillerrail.org.nz

Plus: visit the café and arts and crafts collective in our restored Railway Station.

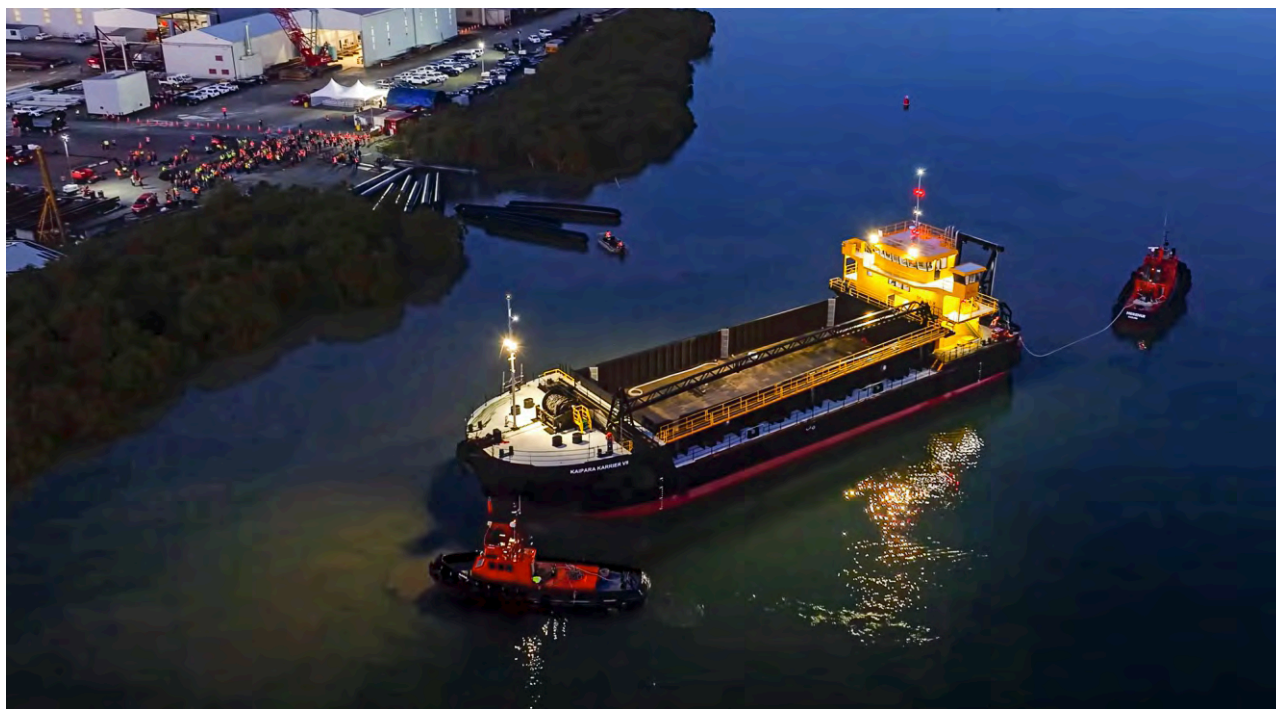
EDC

**ENGINEERING DESIGN
CONSULTANTS**

Sub-division Specialist

Contact us on 09 451 9044 or team@edc.co.nz
www.edc.co.nz

New sand barge goes on duty



This is the Kaipara Karrier VII, the new self-propelled sand suction barge which has just gone into service with Mt Rex Shipping in Helensville.

Kaipara Karrier VII is the third barge in the current Mt Rex Shipping fleet and was built by Culham Engineering in Whangarei. Design started in early 2019, the first steel order was made in December 2022, and the vessel was launched earlier this year.

At 55m it's a bit longer than the company's other barges, and has a 20 percent larger sand capacity of 1000 tonnes. It will be used to extract sand from the Kaipara Harbour for the Auckland construction industry.

The new vessel should have a lifespan of around 40 years; the oldest in-service barge, Kaipara Karrier III, is expected to be retired soon. Mt Rex Shipping is a division of Atlas Concrete, and Kaipara sand is one of the largest single product lines the company supplies.

Big Little Local event returns

The third annual Big Little Local event will take place on Saturday, November 23 based at the pavilion at Rautawhiri Park.

The event is designed to connect the community with the local businesses and community organisations which make our area thrive. Last year around 35 businesses and organisations took part.

Nicky Horsbrough, whose Commercial Road real estate businesses Harcourts the Difference is organising the event, says this year's will be "bigger and better than ever." She says there has already been strong demand for site bookings.

As well as having a site at Big Little Local, business are being asked to contribute items for a silent auction or to sponsor prizes or giveaways, which Nicky says will increase their exposure while supporting the fundraising effort.

The event is free for businesses and community

groups to take part in, and also free for the public to attend. Following the format of previous years, there will be business displays, market stalls, promotional space, information stands, food vendors, raffles, silent auctions, and plenty of prizes.

While last year's Big Little Local raised \$900 for Parent Aid North West through raffles and silent auctions held on the day, funds raised this November will go to

the Harcourts Foundation, a charity which supports local organisations as well as Hospice NZ and Gumboot Friday.

Big Little Local will again be supported by the

North West Country Business Association.

Businesses or community groups keen to take part can visit www.helensville.harcourts.co.nz (or use the QR code on the advert opposite) or contact anyone at the Harcourts Helensville team for more information.



Gumboots
Early Learning Centre

1157 Peak Rd
Just minutes from Helensville / Waitoki / Waimauku

Ph: 477 9038

1st 3 Months Free for New Enrolments!!

Snow Day Fun!!



BIG LITTLE *Local* EVENT

SATURDAY 23 NOVEMBER 2024

PROMOTE YOUR LOCAL BUSINESS

We often hear from new residents that they didn't know all the amazing local businesses and services available right here in our community.

Now's your chance to change that!

We invite local businesses and service providers to showcase what you have to offer at our Big Little Local Event!

It's the perfect opportunity to connect with new and existing residents, promote your business and build stronger community ties.

How You Can Get Involved:

- **Attend:** Promote your business and services to the local community
- **Donate:** Contribute to the silent auctions or sponsor prizes or giveaways to increase your brand exposure while supporting a great cause!

Help us make this event a success while giving back to our community!

CONTACT US TODAY!



helensville.harcourts.co.nz

09 420 7663 | helensville@harcourts.co.nz

Harcourts The Difference

The Difference Limited Licensed Agent REAA 2008

Proudly supported by the



ANNUAL ART TRAIL - HELENSVILLE, AUCKLAND

ARTS in the VILLE

LABOUR WEEKEND 2024

26-28 OCTOBER
10-4pm

www.artsintheville.co.nz

@artsintheville.co.nz • info.artsintheville@gmail.com



Funds in place for town entry sculpture

The \$60,000 needed to build the proposed Helensville town entrance sculpture has already been raised - without the need for any public fundraising.

Helensville News first reported on the planned artwork 12 months ago. The idea for the sculpture came from Helensville Lion Dennis Cummings, and renowned local sculptor Jeff Thomson was brought in to come up with the design.

At that time, Dennis expected it to take 12 to 18 months to raise the funds.

"But raising the money was the easy bit," he says, thanks to three \$20,000 donations - one from Helensville Lions Club itself, another from the Lloyd Morgan Lions Clubs Charitable Trust, and another from the late Roy Monk's Paeroa Trust.

Instead, the holdup has been waiting on approval from Auckland Council to locate the sculpture on the grass area in front of Helensville's Te Awaroa Museum carpark - which is council land - and also permission from NZTA to locate it beside what is a state highway.

"If we got the go-ahead tomorrow, we'd have it up in six months," says Dennis.

He says the Lions Club has now hired a former Council arts staff member to help navigate the project through the red tape side of things.

While all of the originally estimated cost of the project has been raised, Dennis says if the sculpture has to be located further back from the road onto what is landfill, that could mean additional costs for foundations and some further fundraising may be needed.

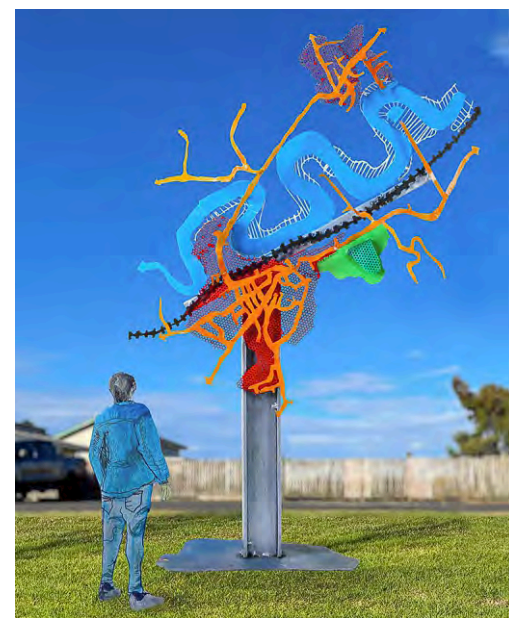
A large part of the project's cost will go on things like engineering design, resource consent, and health and safety, plus the main structural construction will have to be done by a qualified engineer.

The seven to eight metre tall sculpture depicts an aerial view of the Helensville area. It shows the Kaipara River, the railway to represent the town's early railway history, the Helensville Showgrounds as a link to the area's farming heritage, main roads, and the Helensville and Parakai township areas. It will be mounted up high on a support designed to look like a kauri tree trunk, reflecting the South Kaipara's important early kauri milling industry.

Over the past 12 months the design of the sculpture has been continually tweaked by Jeff. When *Helensville News* saw the original mockup the sculpture was mostly in different shades of blue. That has since become much more colourful with the road network changed to a bright orange, red introduced, and green areas brightened.

The final iteration will also incorporate Māori references into the design, most likely in the form of patterns printed on to the structure.

Artist Jeff Thomson has works in collections, museums and art galleries throughout New Zealand and overseas, and in 2000 created the well-known giant gumboot sculpture in Taihape.



• An early mockup of the sculpture as shown on the front of the Lions 2024 phone directory

Out of zone enrolments

Up to 10 places are available for out-of-zone Years 0-8 students at Helensville Primary School for next year.

Applications for the 2025 out of zone places close on Tuesday, October 15 and should be made in writing to principal Richard Bennett at: principal@helensville.school.nz.

Successful applications will be selected according to a range of criteria. If the number of applications exceeds the number of available places, students will be selected by a ballot on Wednesday, October 23. Parents will be informed of the outcome of the ballot within three working days of it being held.

Performance cars on show

A car meet for performance vehicles will be held in Helensville on Saturday, October 12 from 1pm to 4pm.

It's being co-hosted by Shane 'Corner Hunter' Harris and Helensville Mechanical Services at 90 Mill Road and will be held at their premises in conjunction with a workshop open day.

Shane Harris has a following among proponents of JDM (Japanese Domestic Market) performance cars, and it's expected around 25 JDMs, classics and other performance vehicles will be on show.

"All performance cars are welcome - JDM, classics etc. Park up and display your car or if you don't have a car come along and check out all the cool performance cars that will be there," says Helensville Mechanical's Sam Hayfield.

There will be food trucks, a bouncy castle, racing simulators, and spot prizes, and the family-friendly event is free for spectators.

Harcourts The Difference



BUY - SELL - RENT

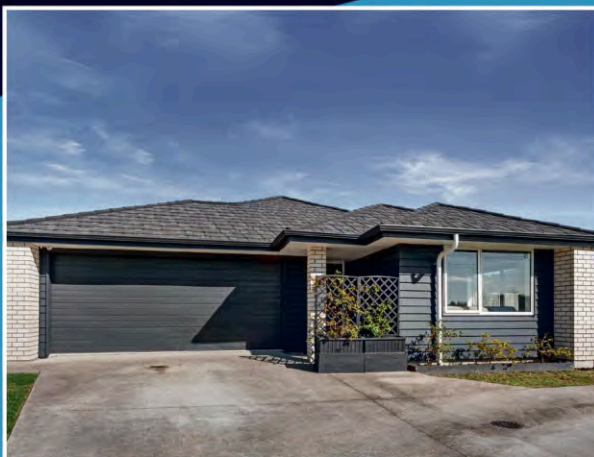
09 420 7663

helensville@harcourts.co.nz

helensville.harcourts.co.nz

92 Commercial Road, Helensville 0800

YOUR *Trusted* LOCAL PROPERTY EXPERTS



169 Rautawhiri Road, Helensville
NOW \$995,000!
www.harcourts.co.nz/HE7827
Nicky Horsbrough | 027 288 0113



3 Miro Street, Helensville
\$1,395,000
www.harcourts.co.nz/HE7858
Nicky Horsbrough | 027 288 0113



19 Kwariki Road, Helensville
Price By Negotiation
www.harcourts.co.nz/HE7854
Nisha Page | 027 524 6550



37 Te Pua School Road, Helensville
\$1,549,000
www.harcourts.co.nz/HE7855
Nicky Horsbrough | 027 288 0113



80 Wilson Road, South Head
Offers Over \$695,000
www.harcourts.co.nz/HE7839
Graeme McLeod | 027 450 2846



143c Tuparekura Road, South Head
Offers Over \$2,300,000
www.harcourts.co.nz/HE7852
Graeme McLeod | 027 450 2846

The Difference Limited Licensed Agent REAA 2008

Support local when shopping for Christmas

Following our August editorial, let's get behind our local retailers and shop locally this year - Christmas is less than three months away.

Supporting local retailers puts money back in our area - these people live and spend here, they pay rates, and

many support local charities, schools, and organisations. By shopping with them, your money stays in the area rather than going to a nationwide chain or even worse, offshore.

Here are some ideas to help you support local retailers.

■ **TEENS:**

For those with cars, petrol vouchers from Caltex Helensville or G.A.S will go down well. Maybe take them op-shopping locally. Jewellery and treats from Eleventh Hour or FIGG, or an eye/nail treatment or facial from Beauty Elixir, Lash Envy or Topcoat.

Vouchers for one of the local adventure businesses like Tree Adventures, Delta Force Paint Ball, Woodhill Mountain Bike Park, the Sandspit, or a pool pass for Parakai Springs for them and their friends.

■ **MEN:**

- A massage at one of the three local massage businesses;
- A Liberty Brewery and burger night;
- There's plenty for gardening dads at Kaipara Coast Garden Centre or Mitre10's garden section;
- For outdoor types, there are great clothing choices at Wrightsons, Farm Source, and Farmlands;
- A fuel voucher;
- Tools from Mr Thrifty, Warehouse Timber Co, and Mitre 10 Helensville;
- There are many treasures at The Everything Shop or Upholstery Services' antique shop, such as vintage tools and records;
- Shout them a fishing trip on the Kaipara, complete with food and drink;
- Have a game of golf with him, even if you're all useless; it's a fun day spent together, with a drink and a pie afterwards.

■ **MOTHERS:**

- A facial, massage or spa treatment from those mentioned above.

■ **GRANDPARENTS:**

Grandparents don't usually want 'stuff' - they would rather spend time with you and share an experience. So give them a homemade voucher for a lunch hamper and make a date. Then make up the hamper with local treats like bread from Real Bread Company, salami and condiments from River Valley Meats, pastries from Helensville Bakery or Real Bread, sushi from WOW Sushi, a pizza from Mr Pizza or Fire & Slice, or go for chicken & chips from Parakai 4 Square. Then head off to a local spot like Omeru Reserve, Shelly Beach, Te Rau Puriri Park, Lake Otatoa, or Muriwai Beach.

Other options:

- Take them to Te Awaroa Museum;
- Visit the Helensville Rail Museum;
- A Kaipara Harbour cruise aboard the Kewpie Too;
- Do the sculpture walk at Kaipara Coast Garden Centre;
- Shout a lunch or dinner at one of our restaurants - Butcher Baker, Maxx, Khao Kang Thai, Turkish in the Ville, Chinese, Liberty Burgers.

■ **DO GOOD:**

If none of the above appeals, make a donation in their name to a local charity they may have an affinity with, such as Kai Collective, Te Awaroa Museum, Kindred Family Services, Kaipara Coastguard, Hospice, St John, Helensville RSA, Helensville A&P Association. The charity will certainly appreciate it and you all get to feel good about helping those in our community.

Finally, don't forget the local Helensville Village Market, held at the Helensville showgrounds on the third Sunday of each month. There are plenty of local crafts and goods which make ideal gifts.

■ **OVERSEAS GIFTS:**

Sending overseas is expensive so think light, local or iconic Kiwi such as:

- Te Awaroa Museum 2025 Calendar from the museum, FIGG, or Paper Plus;
- NZ teatowels or keyrings (FIGG);
- NZ magazines (Paper Plus);
- NZ jewellery or body and lip balms (Eleventh Hour or FIGG);
- Locally made crafts (Railway Craft Shop);
- Mens socks or hats (Farmlands, Wrightsons or Farm Source);
- Swandri or CCC (Wrightsons).



Childcare for children OPEN 7.30am to 5.30pm

- Qualified, nurturing teachers
- Great literacy & learning resources
- Get ready for school programme
- Covered outdoors area
- Separate under-2s room
- 20 hours ECE subsidy

Session Times* ■ 8:30am to 3:30pm
■ 7:30am to 5:30pm

* Can be flexible if required

130 Commercial Rd, Helensville
Ph: 09 420 7253
www.sunnydayspreschool.co.nz

COME VISIT OUR UNIQUE BOUTIQUE RURAL CARE FACILITY



You're welcome to come in for a cuppa and see us or ring us today to discuss a complimentary day stay

Situated on the Twin Coast Discovery Highway off State Highway 16 within reach of Muriwai Beach and the Kaipara Coast.

A caring environment nurtured by our dedicated team
Rest Home • Hospital • Secure Dementia • Day Stays

NO PREMIUM ROOM CHARGES



09 420 8277 | 143 Parkhurst Rd, Parakai | info@craigweilhouse.co.nz

- Liberty Brewery now have a gin range - combine with a bottle of tonic, a couple of lemons, and some snacks;
- Lunch or dinner at her local favourite restaurant or café;
- A voucher saying you'll do the housework, dinners, and/or chores for a week;
- A magazine subscription or a book from Paper Plus - and get an exchange voucher;
- Take her to pickleball at Waioneke Hall on a Sunday morning, or for a walk along Muriwai beach, with a surprise morning tea afterwards in the forest.

Coastguard team are award finalists

Helensville-based Coastguard Kaipara is a finalist for Unit of the Year in the Coastguard's annual Volunteer Awards of Excellence.

The award recognises the Coastguard unit which in the past year has achieved excellence in all aspects of its management and operational activities.

Our local volunteers are up against Coastguard Marlborough and Coastguard Queenstown for the award, which will be announced in mid-October.

Unit of the Year is one of nine awards to be given out this year, covering a range of team-based and individual categories.

A prestigious Supreme Volunteer of the Year award will also be announced on the awards night, chosen from the individual category winners.

Coastguard North Kaipara, based at Tinopai and described as "the little unit that can", is also up for a gong, being a finalist with Marlborough and Ōpōtiki for Community Engagement Unit of the Year, which recognises excellence in the areas of public relations, fundraising, or community engagement.

The awards are a way to recognise and celebrate volunteers from across the country, with finalists representing units from Hokianga in the far north to Bluff in the south.



One Contractor For All Your Needs

Geoffrey Sawyers
0274 817 478 420 8738
Email: visionlandscapes@xtra.co.nz
www.visionlandscapes.co.nz

med centre notes

I'm incredibly happy to welcome Dr Tomos Longworth back to Kaipara Medical Centre from the start of October. Many readers may be familiar with him as he previously worked at KMC for three years - but for those who are not, here's a brief introduction.

Tomos is originally from the UK where he completed his medical degree as a postgraduate. Prior to that he completed a degree in psychology, and has experience working as a nursing auxiliary in a UK hospice. He's a Member of the Royal College of Surgeons (UK), and a Fellow of the Royal New Zealand College of General Practitioners. Tomos has special interests in skin cancer management and diabetes.

I have known Tomos for a very long time. We met at medical school in 2004 and have worked together in many different settings over the years. We moved to New Zealand 10 years ago and have lived in the local area since 2018, when we both



• Dr Tomos Longworth

- Diabetes care - if you or someone in your family has diabetes then contact us to book in for a free annual diabetes check.

For more information visit: www.kaiparamedicalcentre.co.nz or email: admin@kaiparamed.co.nz, or find us on Facebook.

joined KMC. We have three children aged 7, 5 and 2 who attend a local school and daycare. Outside of work you will find Tom looking after his children or gardening.

We are very much settled in this wonderful community and feel that everyone deserves excellent healthcare.

In other news:

- Kaipara Medical Centre is still open for new patient enrolments. See our website or speak to our reception team for more details.
- Our daily acute care clinic runs from 9am to 3pm Monday to Friday for immediate medical needs - phone the clinic from 8am to get an 'on the day' appointment.
- Cervical screening - come and see our nursing team for your cervical screening. Most women can now do the self-taken HPV test - a free service at Kaipara Medical Centre.

- Dr Kathryn Elcock
Clinical Lead, Kaipara Medical Centre

the business

Santa is coming to Helensville! After four long years we have finally managed to get him to come back.

North West Country, Our Village, The Village Market, and the Helensville A&P Association have joined forces to have a combined Santa Parade and Christmas Market event.

On Sunday, December 15 the Helensville Showgrounds will host the Christmas market from 8:30am, with the Santa Parade at midday. The floats will make their way round the race track and spectators can watch from the sides. There will be music, games, food trucks, lollies, face painting, hair braiding, and more.

We encourage all local and neighbouring businesses to enter a float and join us for a fun-packed day. Head to our website to enter a float or find out more.

Anyone interested in sponsoring part of the parade is welcome to speak to me as we have a few items to pay for to make the day a real success. Anyone wanting a market stall should email Sarah Legg at: sarah@riversidecrafts.co.nz.

North West Country is offering a digital marketing course on Tuesday, October 15 at Morepork BBQ in Kumeū for members wanting to know more about websites, target audiences, Facebook Meta, Google Adwords, videos, brand awareness, and AI and its use in digital marketing. The course is by donation and only for NWC members. See our website or Facebook to book tickets.

The North West Country Business Coaching programme is working well with five businesses taking up the offer so far. Local business coach Leanne Coste has been providing local businesses with tips and tricks for setting up, improving, and managing their systems. Burmester Realty in Helensville recently completed a coaching session and loved the support, saying "the team found it incredibly insightful, and we've already started to implement some of the ideas discussed. Leanne's guidance has sparked a lot of enthusiasm, and we're excited to see where these new strategies will take us."

- Danielle Hancock
Manager, North West Country Business Assn
manager@northwestcountry.co.nz



CYPRESS SAWMILL

BUY DIRECT FROM THE SAWMILL

MACROCARPA

- Kitset Raised Gardens
- Kitset Compost Bins
- Landscape Sleepers
- Pergolas and Beams
- Dry Macrocarpa for Furniture and Joinery
- Laminated Timber Benchtops
- Live-edge, one piece Macrocarpa Slabs
- Firewood, Mulch and Sawdust

TREATED PINE

- Posts and Rails
- Retaining Walls
- Tree Stakes
- Decking Timber
- H5 treated Posts & Beams

700 Kahikatea Flat Rd, Waitoki
www.cypress-sawmill.co.nz
420 5485

15% OFF
Spring Special
on Kitset
Garden
Beds



Helensville Birthing Centre

TE PUNA WHANAU KI TE AWAROA

Helensville Birthing Centre is your local community facility. It provides a free service for women who choose to give birth in a low-tech environment. Alternatively, women who give birth in hospital can then transfer to us for the opportunity to rest and establish breastfeeding.

You are welcome to call in and have a look around, or browse our facilities online.

53 – 65 Commercial Road, Helensville
Ph: (09) 420 8747

Email: bookings@helensvillebirthingcentre.co.nz

www.birthingcentre.co.nz

Annual General Meeting

Wednesday 30th October 19:00 hrs

St Matthew's Church Lounge
60 Garfield Road, Helensville

All welcome

There have been three nominations received for the position of Community Trustee:

- Ali Seakens
- Nicola Keen-Biggelaar
- Mark Dennis

These nominations will be formalised at the AGM on Wednesday 30th October 2024.

Have a window or door that needs repair or maintenance?



Our experienced team of window & door specialists can help.

WINDOW AND DOOR REPAIRS, SECURITY DOORS AND INSECTSCREEN SPECIALISTS.

exceed
we fix windows & doors

Call free anytime 0800 25 25 00
or 0272 840 952

www.exceed.co.nz

 **DANIELLE HANCOCK** 
Helping you with your business needs.
manager@northwestcountry.co.nz

HELENSVILLE PANEL & PAINT

- Collision Repair
- Car Restoration
- Insurance Work

63 MILL ROAD 09 420 6050

Christian arts part of Arts in the Ville

Jodie Allen has always loved art and majored in art and photography while training to be a teacher. She has taught art to children for 30 years, and has now begun to focus on her own passion for art and to connect it with God's purpose in her life.

Jodie is currently exploring oil and watercolour painting and is inspired by nature and highlighting the beauty in the world through visual language, photography and painting. She enjoys using natural materials, and contrasts of light and movement to enhance her work.

Jodie says she "works with the Holy Spirit guiding her" and believes that before she even picks up a brush to paint God has already chosen the person who the painting is for.

Jodie also designs and sells custom photo frames.

Her work will be on show at the Christian Arts Festival at the Magnify Church's Lighthouse, running as part of Arts in the Ville over Labour Weekend, 10am to 4pm Saturday, October 26 to Monday 28.

There will be a special exhibition opening event on Friday, October 26 at 6pm at Magnify Church, which will feature an 'open mic' poetry performance.

Christian artists keen to exhibit their works at the



• Jodie with some of her paintings

Christian Arts Festival should take them to the Lighthouse, next to Magnify Church, 118 Commercial Road, Helensville, between 4.30pm and 6.30pm on Tuesday, October 22. Exhibitor fees are \$5 for one piece, or \$3 each for two or more. Artworks do not have to have a religious content.

For more information email Pauline Denton at: paulinekiwidenton@gmail.com.

councillor comment

In 2010, the government chose to establish seven substantive Council Controlled Organisations (CCOs) in Auckland without the public's input or consultation. Unlike the other CCOs, this included establishing Auckland Transport as its own statutory body, granting it full control over all local roads and significant delegated powers equivalent to a regional council.

It is a misnomer to call Auckland Transport a Council Controlled Organisation - it is not controlled by the Mayor, and therefore ultimately not by Auckland's ratepayers.

The key point to understand is the subtle difference between who Auckland Transport is accountable to, and who really controls it. These waters are murky, but I will try to clarify them for you.

The CEO of Auckland Transport is accountable to a Board of Directors, who are then accountable to Auckland Council. However, this accountability is merely by way of updating the Council. Basically, the Board of Directors fully govern Auckland Transport.

Overriding this 'paper' accountability is who really controls Auckland Transport. The CEO of Auckland Transport controls the daily operations and reports to the Board of Directors. So, although you think accountability means control this is not the case. The power and control rests within Auckland Transport itself. There is no control given to the Mayor, and therefore no democratic control given to Auckland ratepayers.

All other councils across New Zealand decide their own transport budgets and what projects they build. These elected mayors, councillors, and local boards decide those, and thus are accountable to their ratepayers for getting things right. You could argue that the ratepayers are ultimately in control about how their rates get spent for their local transport needs.

However, in Auckland this is different. Why?

Other than the Board of Directors there is another power controlling Auckland Transport. Central government (via the Minister of Transport) has significant control over Auckland's transport budgets and which projects and services get funded. The law currently allows the Minister control over 51 percent of Auckland Transport's funding - and the power to dictate to the Board of Directors which projects that money is spent on.

Auckland Council's role under the law is merely one of a shareholder. It can appoint the members of the Auckland Transport board and provides it with a Letter of Expectation, which includes direction and targets, to which the Auckland Transport Board

responds with a Statement of Intent.

Auckland Transport is 'accountable' to the council through these mechanisms. However, this pseudo accountability is not the same as having control.

The Mayor of Auckland has heard from councillors, local board members, and the public that accountability, power, and strategic alignment to Auckland's needs from Auckland Transport is not working.

Despite progress from various external reviews over the years, many of the challenges identified with the CCO model are still being observed, including concerns about public trust and confidence, strategic misalignment, ineffective democratic accountability, cost-effectiveness, and duplication of services.

The question the Mayor is wrestling with is the potential of jumping from the frying-pan into the fire if Auckland Transport was to be brought in-house under Auckland Council.

One of the original reasons Auckland Transport was set up was to remove political squabbling between regional councillors who wanted to achieve short-term wins rather than thinking long term and building infrastructure ahead of Auckland's housing growth.

Unlike previous Mayors, Wayne Brown has taken on the challenge to address whether Auckland Transport has systemic problems that require massive structural change, or whether further adjustments to the existing model could address these problems - including gaining control and accountability back to ratepayers.

Curiously and unbeknown to Mayor Brown, New Zealand First leader and Deputy Prime Minister Winston Peters has introduced a member's bill to Parliament that seeks to disestablish Auckland Transport (the bill must be drawn from a biscuit tin in order to be considered by Parliament). Peters is concerned about a lack of control and accountability back to ratepayers.

Meanwhile, the Mayor will be working on his own solutions with the goal of presenting an alternative to Aucklanders for managing Auckland Transport.

- Greg Sayers, Rodney Ward Councillor
greg.sayers@aucklandcouncil.govt.nz
Ph: 021 285 9900

local board matters

Democracy is expensive and time consuming but let's try not to make it more so.

It is standard behaviour for central government to point out that local government is too expensive, and they need to pull up their socks. This has the air of 'truthiness' about it, so the resulting media and community pile-on is entirely predictable.

The issue I have with this narrative is that central government policy and legislation is what has created the ever-widening scope of responsibility and expected delivery that drives these increased costs.

The administration of the RMA has played a massive part in driving up the cost of running a council and these costs were initially anticipated to be funded on a 'user pays' basis, but at present legislative constraints prevent this. To date the reform of the RMA hasn't progressed beyond the requirement for urgent and expensive feedback to be provided for councils to draft policy that never sees the light of day.

Similarly, the Local Government Act requires councils to comply with massive and largely pointless processes and timeframes that a city like Auckland

could and should be able to vary - if only the legislation permitted this.

Structurally Auckland Council suffers from considerable duplication of roles and responsibilities following the creation of the Supercity. Much of this was well intentioned but sadly unproductive. Books will be written about this stuff for future students of management to consume. I sincerely hope our Mayor can rectify some of this but perhaps he will need to do another term or two.



Things that would immediately produce saving:

1. We need a longer political term. Three years is far too short - a term of four or even five years would change the balance between planning and delivery. We just get started on delivering something and all bets are off due to a change of governors, both central and local.

2. We need fewer laws. Government has proven to be spectacularly ineffective in solving problems by making new laws. We need fewer laws and a focus on the consequences of non-compliance. A huge bureaucratic drag is creating an excessive overhead on us all. This applies equally to central and local government.

3. We need less talking and more action. The overhead and delay that the consultation process imposes has exceeded any benefit. The public are over it, and the process of consultation seems to be more important than the delivery of the proposed investment. The devolution of governance to the few folks that bother to participate in the consultation is a nonsense. What the public really value is a reduced 'time to benefit' - stop the conversations and start the construction, less hui and more doui.

I have no expectation that any of the above will happen in my lifetime, let alone in my political future, but perhaps the next bunch of elected representatives can carry the torch.

What we need are elected representatives that understand that their role is not to interfere and harass those charged with operational delivery, but instead to set priorities, define outcomes and measures for delivery, and to put aside their passionately held positions in favour of seeking and understanding expert advice, and avoiding conflicts of interest and predetermined positions.

If you want to help deliver better value for money and reduced time to benefit for your community, then please consider running for the Local Board in the election next year. Feel free to contact your existing board members if you want to learn more.

- Brent Bailey
Chair, Rodney Local Board
brent.bailey@aucklandcouncil.govt.nz

Busy October for Arts

Helensville Art Centre has a busy October planned, including opening for extended hours over Labour Weekend as part of Arts in the Ville.

The Centre will run free arts and craft activities as part of the Family Fun Day on Sunday, October 20 to mark the reopening of the War Memorial Hall building. They will include a Crafty Badges workshop with Kiri Abraham, and a make-your-own paper boat class with Jeff Thomson (who will also hold one on October 19).

The October exhibition is 'Unpacking' by Arwen Flowers. Through paintings Arwen examines the intimate experience of unpacking the belongings of her beloved Granny from degraded storage boxes. The abstract paintings examine care and concern for maintaining and preserving identity and family history. 'Unpacking' runs from October 2 to 28.

Arwen will hold a workshop in conjunction with her exhibition over the Arts in the Ville weekend - details online at: artcentrehelensville.org.nz.

The Art Centre's Media Room gallery will feature ceramics work from the Term 3 after school class.

Upcoming in Term 4 are:

- Mike Rowland Drawing course, from November 7 to December 12. \$180 for 6 weeks or \$30 drop-in sessions. More details online or contact the Art Centre to book.
- Kirsten Calder Kurinuki Ceramics workshop, Saturdays. November 9 and 16 from 10am to 12:30pm. Limited spaces.
- Kristen Calder exhibition from October 30 to November 23.
- Cash and Carry exhibition from November 27 until December 21.



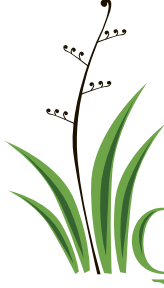
Dion Mayes
Qualified Arborist

All tree work ♦ Pruning ♦ Hedges
Council Approved ♦ Full Insurance
Tree Felling ♦ Tree Chipping Service

Difficult Trees a Specialty
FREE QUOTES

0800 349994
0800 DIZZYH
021 527 219 / 09 420 5352

Landscape Design / Construction / Maintenance
Retaining Walls / Decks / Fencing / Pergolas
Water Features / Lighting / Irrigation
Planting / Plant Supply
Concrete / Stonework / Paving



Creating Nature
Landscapes

info@creatingnaturelandscapes.co.nz
www.creatingnaturelandscapes.co.nz
Call Ben 021 285 4469

Kaukapapa Drainage

- Septic Tank Systems
- Drainage
- Truck & Digger Hire
- Pile Drilling



Phone/Fax: 420 4149
Mobile: 021 926 301
Email: gary@kdrainage.nz

HELENSVILLE NEWS - PUBLICATION INFORMATION

■ **NOVEMBER 2024 deadline: Thursday, 24th October, 2024**
ISSUE DUE OUT TUESDAY, November 5th 2024

■ **Editorial Enquiries, Letters to the Editor, and Advertising:**
Dave Addison
Ph: 021 178 5568
Email: dave@helensvillenews.co.nz

■ **Free Subscriptions to Online Edition:**
Email: subscribe@helensvillenews.co.nz

2024 issue dates and deadlines:

Due out: Nov 5th Copy by: Oct 24th
Due out: Dec 3rd Copy by: Nov 21st

2025 issue dates and deadlines:

Due out: Feb 4th Copy by: Jan 23rd
Due out: Mar 4th Copy by: Feb 20th

- **Editorial:** Ph 021 178 5568.
- **Editor & Publisher:** Dave Addison, Helensville News (2011) Ltd, 502 Fordyce Rd, RD1, Helensville 0874.
- **Design & Layout:** Dash Design, 021 178 5568.
- **Printing:** NZME Print.
- **Copyright:** No material in this newspaper may be copied or reproduced without the publisher's permission.
- **Disclaimer:** Every effort has been made to ensure the accuracy of information in this newspaper, but the editor and publisher accepts no responsibility for any errors or omissions. Contributors' views are their own and do not necessarily represent those of Helensville News or its editorial team.
- **Letters to the Editor:** Should be kept to around 250 words and may be edited as space dictates.

facebook.com/helensvillenews

helensville.news

■ www.helensvillenews.co.nz

town talk

COMMUNITY DINNER

Magnify Church at 116 Commercial Road will hold its next community dinner on Thursday, October 17. The dinners are held on the second Thursday of each month, and a koha donation is asked.

RURAL SUPPORT TRUST DINNER

A free community barbeque dinner for local farm people will be held by the Rural Support Trust at the Helensville Showgrounds on Thursday, October 17. Email Hazel at: nh.macmillan@xtra.co.nz to book.

HELENSVILLE VILLAGE MARKET

Live music from Mike Lea will keep shoppers entertained at the next Helensville Market, on at the Helensville Showgrounds on Sunday, October 20 from 8.30am to 1pm.

Stalls will include local art, crafts and gifts; jewellery; hand knits; collectibles; preserves; plants; fresh fruit and vegetables; pet health products; used items; books and more. Food will be available from the market café and Lions Club sausage sizzle, and there will be barista coffee and free face painting for kids.

Only assistance dogs are allowed on the

showgrounds. A gold coin donation is asked for parking with proceeds going to St John youth and the Helensville/Kaukapakapa scouts.

Contact: sarah@riversidecrafts.co.nz.

NORTH WEST COUNTRY AGM

The North West Country Business Association will hold its annual general meeting on Tuesday, October 22 in the Business Hub, 103C Mill Road, Helensville at 5:30pm. All members are welcome to attend to hear what we achieved over the past year, and help make decisions for the year ahead.

HEALTH TRUST AGM

Helensville District Health Trust will hold its annual general meeting on Wednesday, October 30 starting 7pm in St Matthews Church lounge, 60 Garfield Road.

CHRISTMAS BOOK FAIR

The Helensville Lions Club's annual Christmas Book Fair will be held at the Helensville Showgrounds over the weekend of November 30 and December 1. The last day donations of books can be accepted for this fair is Friday, November 23.

Family Fun Day to mark hall reopening

A Family Fun Day will be held on Sunday, October 20 from 1pm to 3pm to mark the end of two years of reconstruction work on the Helensville War Memorial Hall building.

The work severely affected the building's tenants - Helensville Library, Helensville Art Centre, the Kaipara Memorial RSA, and Helensville Plunket.

The Rodney Local Board led initiative will include garden games, bouncy castles, face painting, and a free sausage sizzle and ice-cream.

Helensville Art Centre will run free arts and craft activities on the day, including a free Crafty Badges workshop with Kiri Abraham, and a make-your-own paper boat class with Jeff Thomson.

Free giant pumpkin seeds to grow for Show

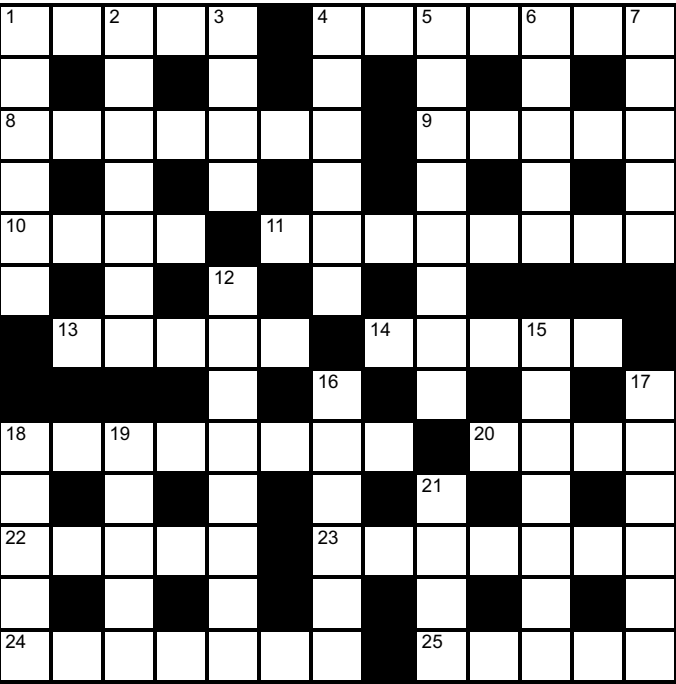
The giant pumpkins displayed outside the main building at each Helensville Show are always a popular attraction, and a keen selfie subject.

To enable more people to enter the oversized vegetables, the Helensville Show office has seeds available for free for budding entrants to grow for the 2025 Show.

There are classes for adults and youth covering both the heaviest and the best colour. October is the ideal time to plant giant pumpkins for them to be ready in time for the show, on Saturday February 22 next year. Note that giant pumpkins are not edible.

Email the office at: info@helensvilleshow.co.nz if you wish to enter.

crossword



September's Answers

Across: 1. Masonry 5. Hairy 9. Amend. 10. Uganda 11. Honshu 12. Tenner 13. Moa 14. Piles 16. Elate 18. Ida 20. Asylum 22. Noodle 24. Barrel 25. Leery 26. Otter 27. Wrestle.
Down: 2. Alamo 3. Oversee 4. Radium 6. Again 7. Red meat 8. Quota 15. Instant 17. Lioness 18. Imply 19. Angler 21. Large 23. Loyal.

Across

- 1. Bay (5)
- 4. Serious collision (5-2)
- 8. Group within a group (7)
- 9. Sort of line dance (5)
- 10. Large town (4)
- 11. Capsize (8)
- 13. Track (5)
- 14. Anaesthetic (5)
- 18. Left-hander (8)
- 20. Worry (4)
- 22. Electromagnetic telecommunication (5)
- 23. Flagellate (7)
- 24. Brings up (7)
- 25. Entice (5)

Down

- 1. Invertebrate creature (6)
- 2. Seafood choice (7)
- 3. Playthings (4)
- 4. Record cover (6)
- 5. Free from error (8)
- 6. Member of the Indian majority (5)
- 7. Type of Chinese cracker (5)
- 12. The exact middle of the day (4,4)
- 15. Aural membrane (7)
- 16. Falls into disuse (6)
- 17. Thoroughfare (6)
- 18. Fragment (5)
- 19. Mammary gland in cows (5)
- 21. Baptismal bowl (4)

Half Price Fees*

For your first 3 months

ACTIVE EXPLORERS
HELENSVILLE
Early Learning Centre

State Highway 16,
14 Commercial Road
Helensville 0800

09 777 5001
cm.helensville@activeexplorers.co.nz

Burnetts

SEPTIC TANK & WATER TANK CLEANING
Serving All Areas
Prompt, Professional Service
Ph AK 412 9210
25 Years Experience

MOBILE
0274 924 494

HELENSVILLE
SERVICES

mba ASSURED

Your trusted local Mechanic

- Servicing, Maintenance, and Repairs of all vehicle makes and models
- Warrant of Fitness (WOF)
- Emergency Roadside Assistance.

90 Mill Rd, Helensville
Ph 09 420 8177

FIRST AUTO ELECTRICAL

Full Mobile Service

Specialists in Auto Electrical & Air Conditioning.
Servicing Vehicles, Heavy Machinery,
Farm Equipment & Marine

Workshop Parts Accessories

Ph 09 427 5748
Mob 021 689 700

BATTERY TOWN
NATIONWIDE BATTERY SPECIALISTS